

P418 - WE02

Gesamtfläche ca. 129,26m²

ERDGESCHOSS

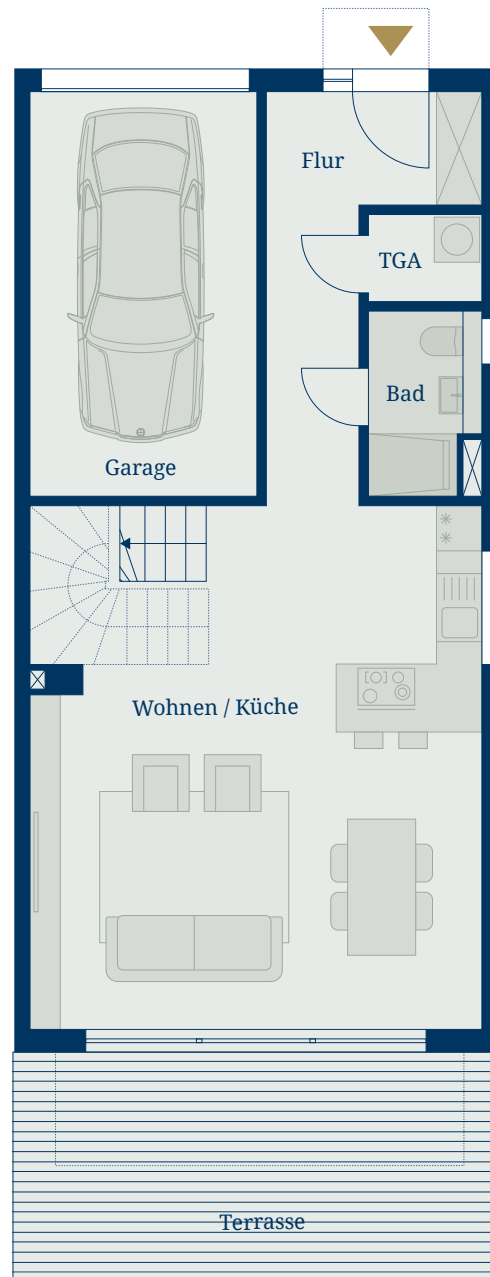
Wohnen / Küche	37,67m ²
Gästebad	3,40m ²
Flur	9,15m ²
Terrasse (50%)	9,75m ²

Fläche ca. 59,97m²

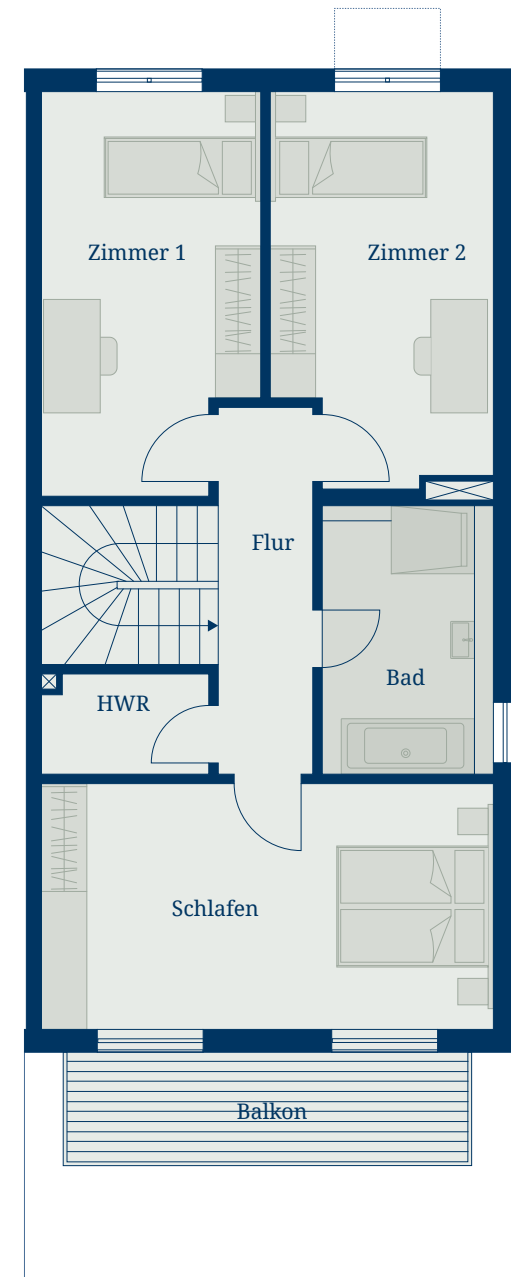
OBERGESCHOSS

Zimmer 1	14,50m ²
Zimmer 2	14,62m ²
Schlafen	19,42m ²
Bad	8,03m ²
HWR	2,86m ²
Flur	6,06m ²
Balkon (50%)	3,80m ²

Fläche ca. 69,29m²



Erdgeschoss



Obergeschoss



M 1:100

